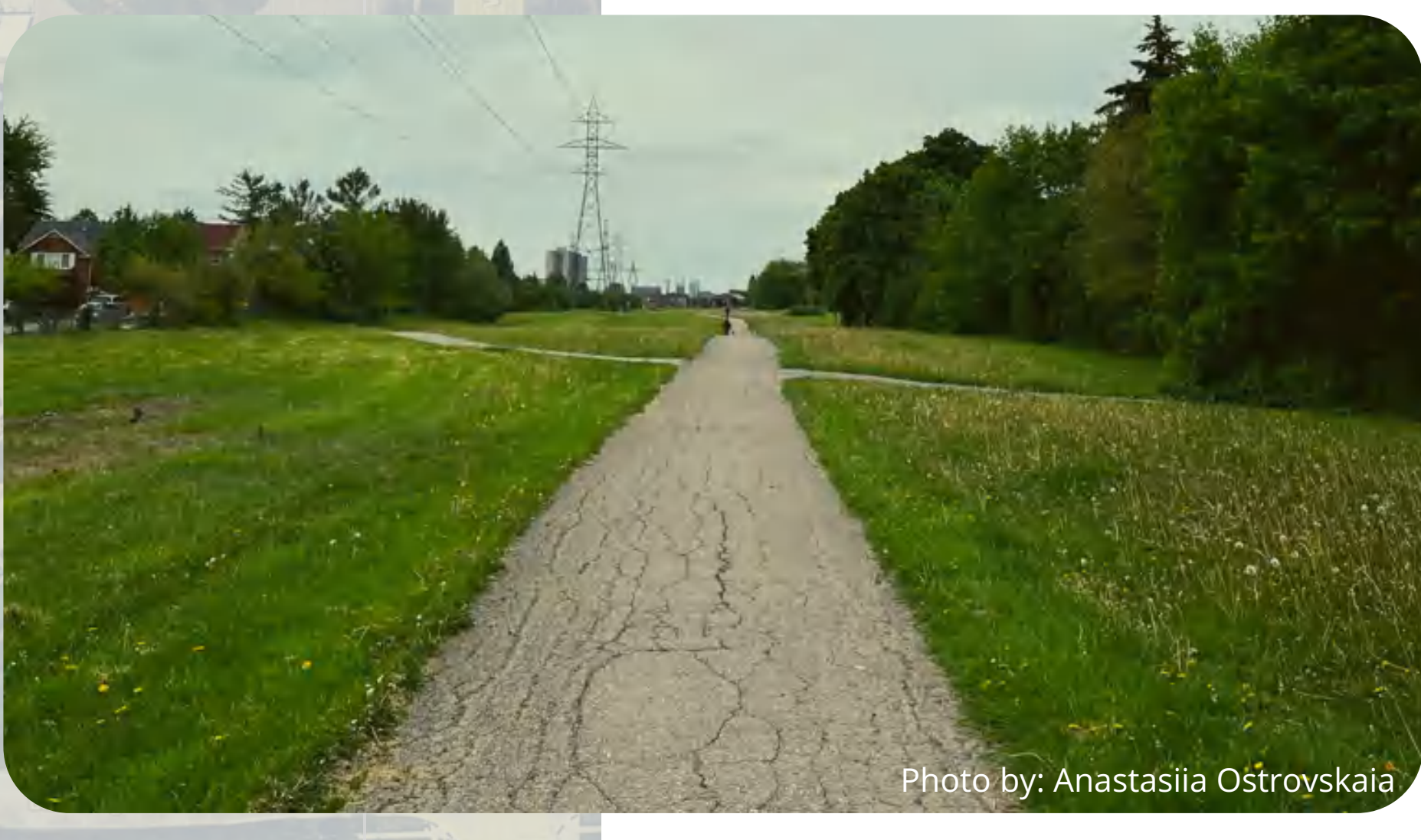


# The Taylor Massey Creek Greenway



1  
To learn more, check out the Scarborough West/Taylor Massey Creek Route Profile and look for this number in the key maps.



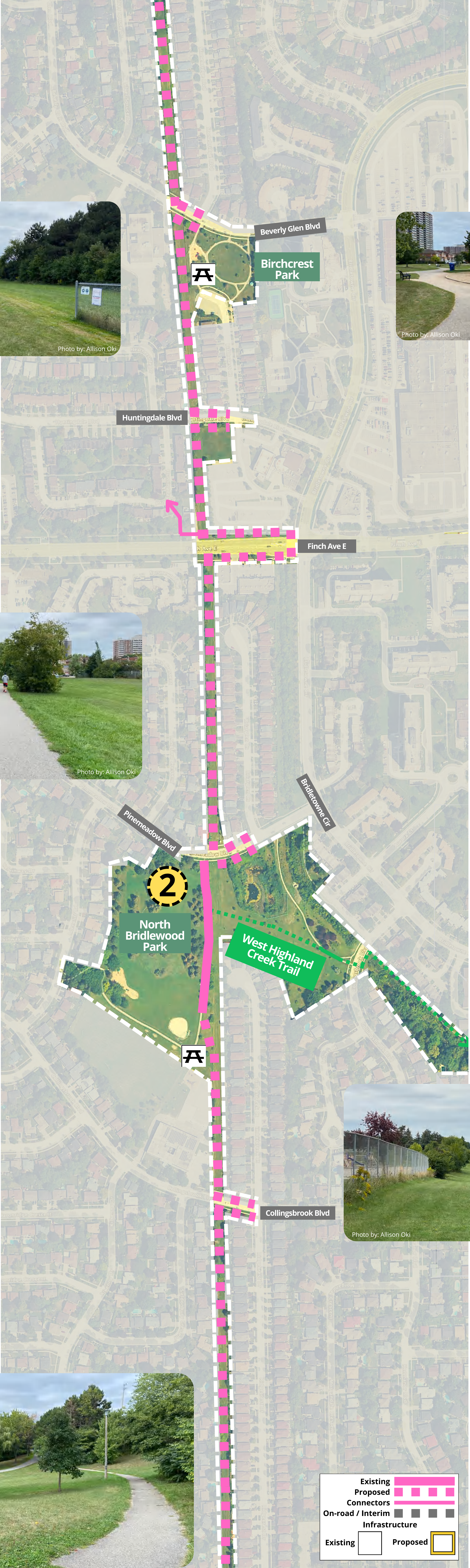
Trail between Bamburgh Park and Huntsmill Park  
Photo by: Anastasiia Ostrovskaia

**DID YOU KNOW?**  
The City of Toronto is currently undertaking a Feasibility Study of potential on- and off-road cycling facilities for the Warden Hydro Corridor from the Finch Corridor to the Gateau Hydro Corridor Trail along the Meadoway.



The Finch Corridor near Warden Ave  
Photo by: Anastasiia Ostrovskaia





Access to the Warden Hydro Corridor from Birchcrest Park

Photo by: Allison Oki



Photo by: Allison Oki

Birchcrest Park



Trail through North Bridlewood Park facing Pinemeadow Blvd

Photo by: Allison Oki



Photo by: Allison Oki

Warden Hydro Corridor from Collingsbrook Blvd



Photo by: Allison Oki

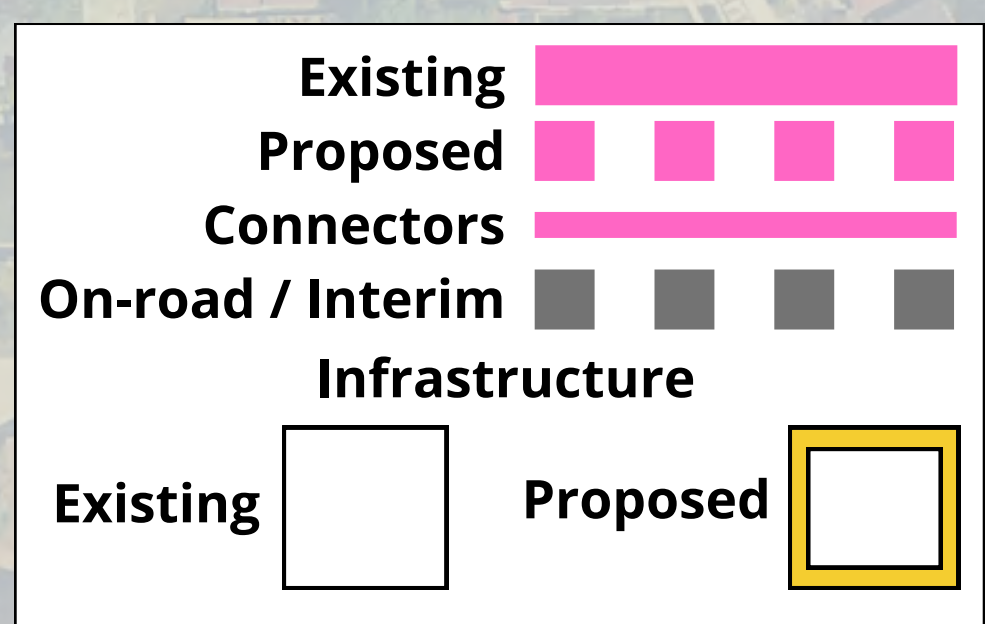






Photo by: Allison Oki

Warden Hydro Corridor from Bridlewood Park



Photo by: Allison Oki

Warden Hydro Corridor west of Vradenburg Park



Photo by: Allison Oki

Neighbourhood walkway to Vradenburg Park



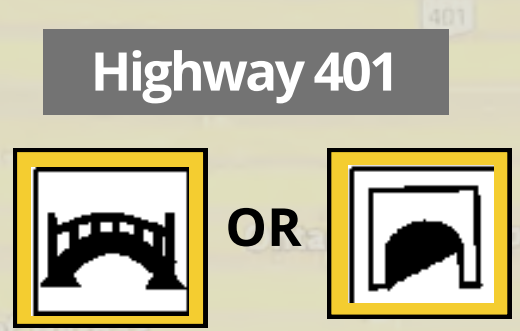
Photo by: Allison Oki

Vradenburg Park



Vradenburg Park

Continue east to Warden Ave to cross over Highway 401



To learn more, check out the Scarborough West/Taylor Massey Creek Route Profile and look for this number in the key maps.



Photo by: Allison Oki

Entrance of Terraview Park





This is where the headwaters of the Taylor Massey Creek are today. Before the 1980s, the Creek began at Victoria Park Ave & Sheppard Ave E, but was moved south of Highway 401 due to highway widening.

4

Terraview Park and Willowfield Gardens



Photo by: Allison Oki

Warden Hydro Corridor at Lupin Dr



Photo by: Allison Oki

Taylor Massey Creek from Willowfield Gardens

**DID YOU KNOW?**

Terraview Park & Willowfield Gardens were part of renaturalization project which won an award from the Canadian Society of Landscaping Architects in 2002.

Continue east to Warden Ave to cross over Highway 401

Lupin Dr

Japonica Rd

Ellesmere Rd

5

Murray Glen Dr

Joy Dr

**DID YOU KNOW?**

The Taylor Massey Creek Greenway is within 1 km of over 190,000 people, which is 30% of Scarborough's population!

Existing	
Proposed	
Connectors	
On-road / Interim Infrastructure	
Existing	
Proposed	





The Taylor Massey Creek Greenway is 25 km long!  
If you were to walk the entirety of this Greenway, it would take 5 hours.



Photo by: André Sorensen

The Warden Hydro Corridor from the Meadoway

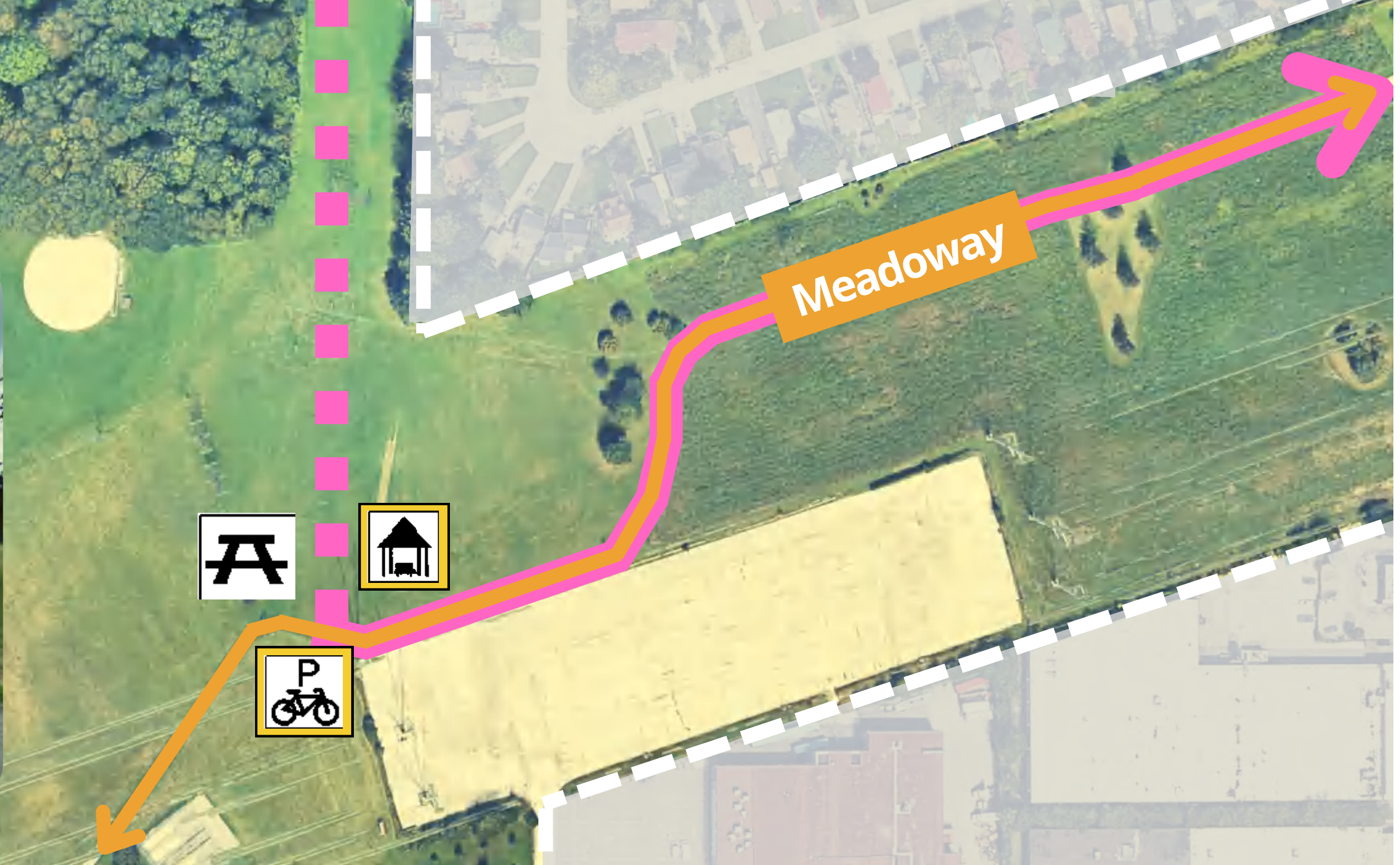


Wexford Park



Photo by: Allison Oki

The Gatineau Trail along the Meadoway



Continue east along the Meadoway on next page





Photo by: Allison Oki

Facing north from the Meadowway



Photo by: Allison Oki

Gatineau Trail west of Birchmount Rd



Photo by: Allison Oki

Facing north from Bertrand Ave

Continue west along the Meadowway on previous page

6



Meadowway

Givendale Allotment Gardens

Jack Goodlad Park

Lord Roberts Woods

8

Scarborough Hydro Green Space

Maidavale Park

Existing	
Proposed	
Connectors	
On-road / Interim Infrastructure	
Existing	
Proposed	



The Meadowway west of Kennedy Rd



Photos by: Allison Oki

**DID YOU KNOW?**  
From the 1950s to 70s, Jack Goodlad Park was the site of a drive-in theatre. It was closed due to challenges from increased traffic on Kennedy Road.



Photo by: Allison Oki

Gatineau Trail along Scarborough Hydro Green Space

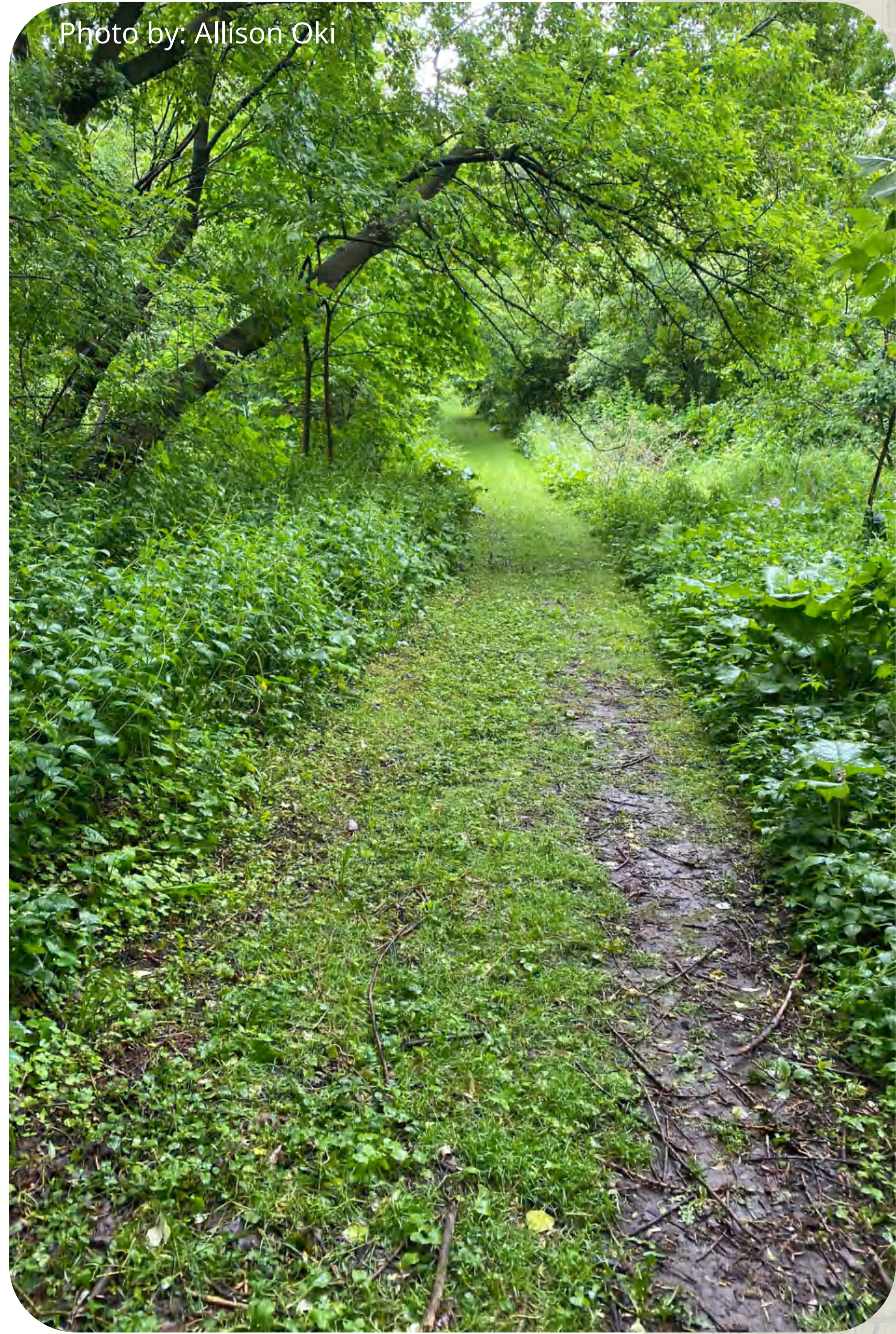


Photo by: Allison Oki

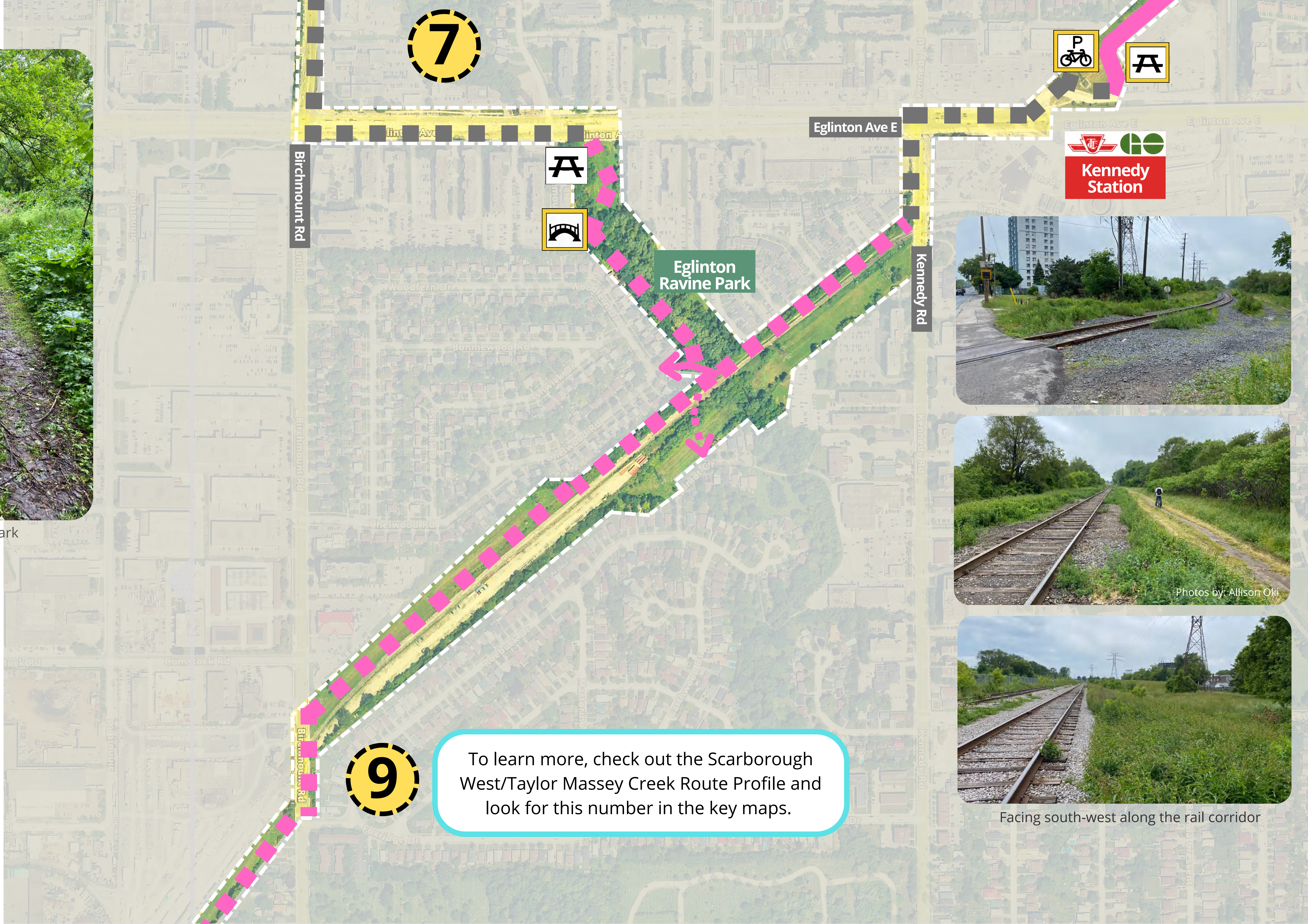
Mooregate Bridge



Photo by: Allison Oki



Grassy path in Eglinton Ravine Park



Photos by: Allison Oki



Facing south-west along the rail corridor

To learn more, check out the Scarborough West/Taylor Massey Creek Route Profile and look for this number in the key maps.





Photo by: Allison Oki

Walkway to hydro corridor from Pidgeon St



Pidgeon St

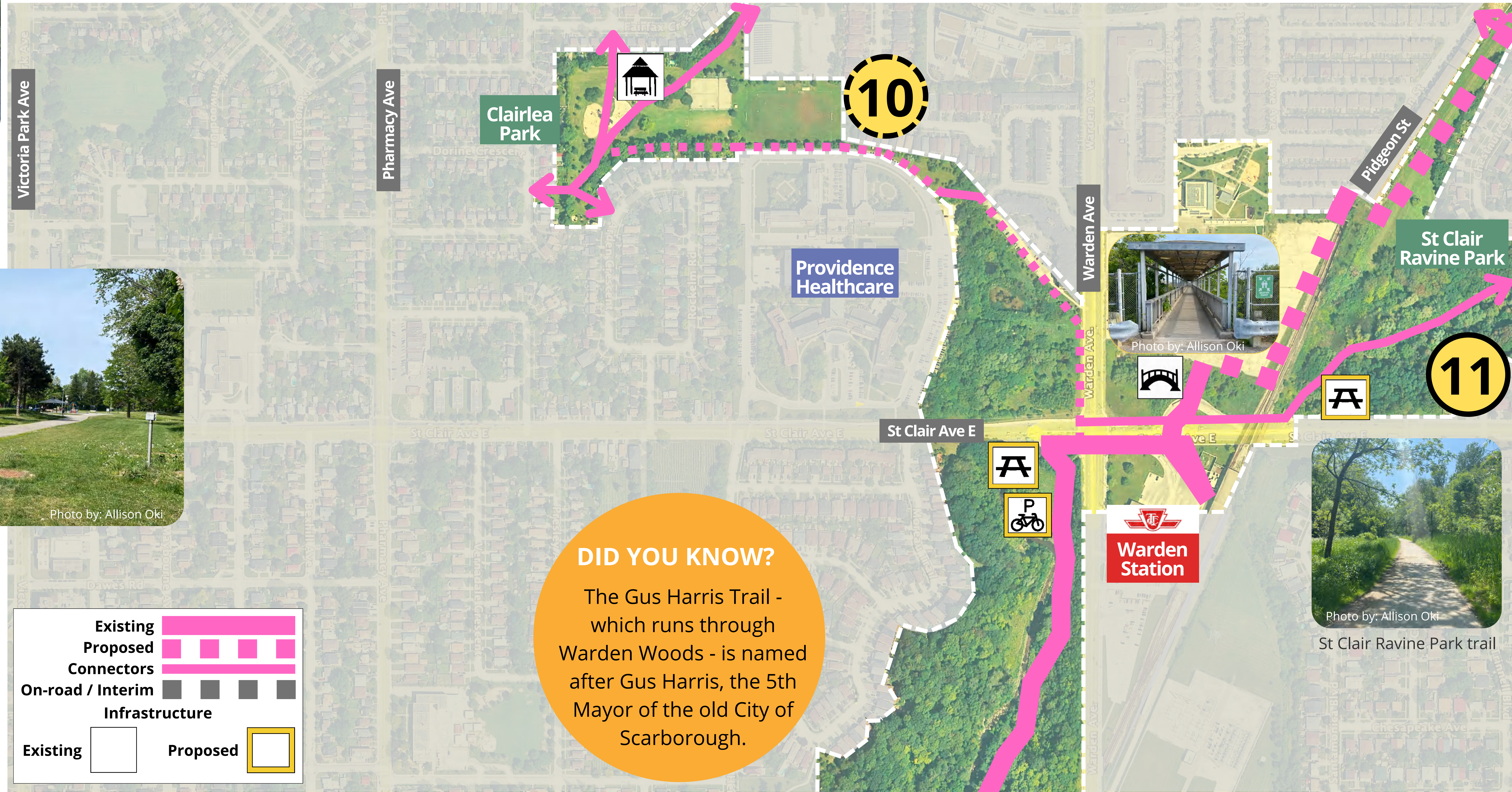
Continue on next page

Pine Hills Cemetery



Photo by: Allison Oki

Trail at Clairlea Park



Victoria Park Ave

Pharmacy Ave

Warden Ave

Clairlea Park

Providence Healthcare

St Clair Ravine Park

St Clair Ave E

Warden Station

10

11

Existing	
Proposed	
Connectors	
On-road / Interim Infrastructure	
Existing	
Proposed	

**DID YOU KNOW?**  
 The Gus Harris Trail - which runs through Warden Woods - is named after Gus Harris, the 5th Mayor of the old City of Scarborough.



Photo by: Allison Oki

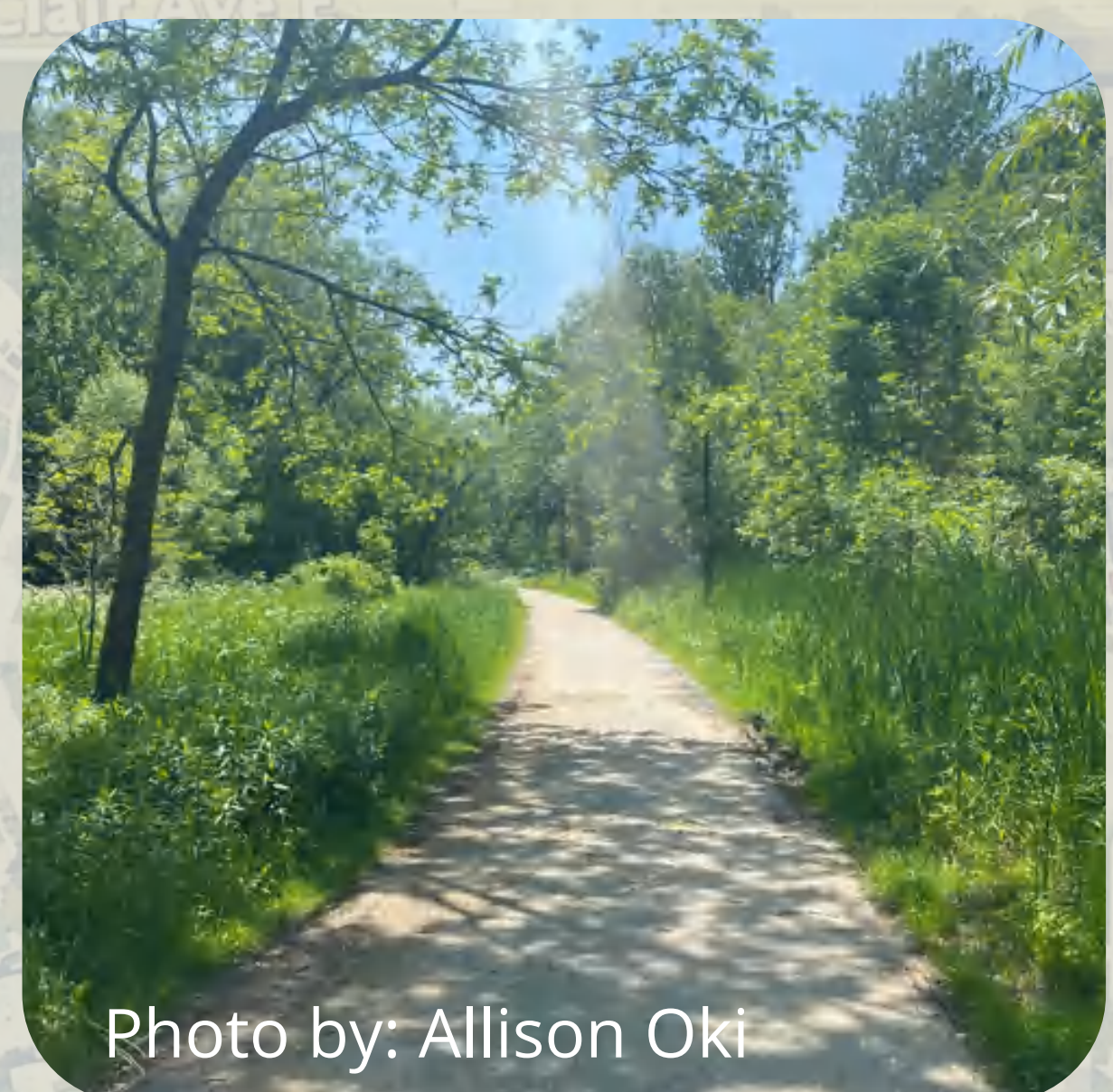


Photo by: Allison Oki

St Clair Ravine Park trail



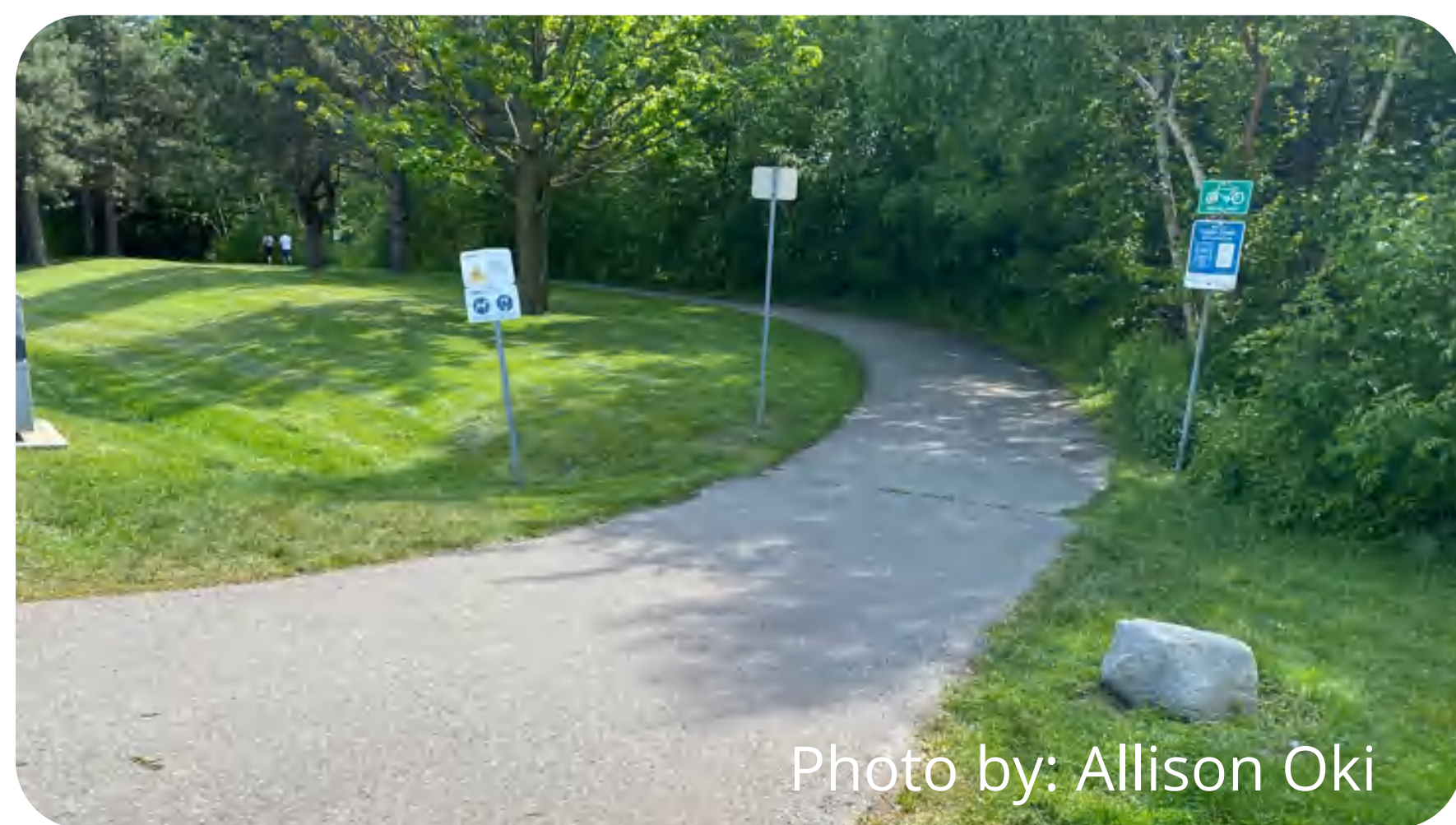


Photo by: Allison Oki

Entrance to the Taylor Creek Trail

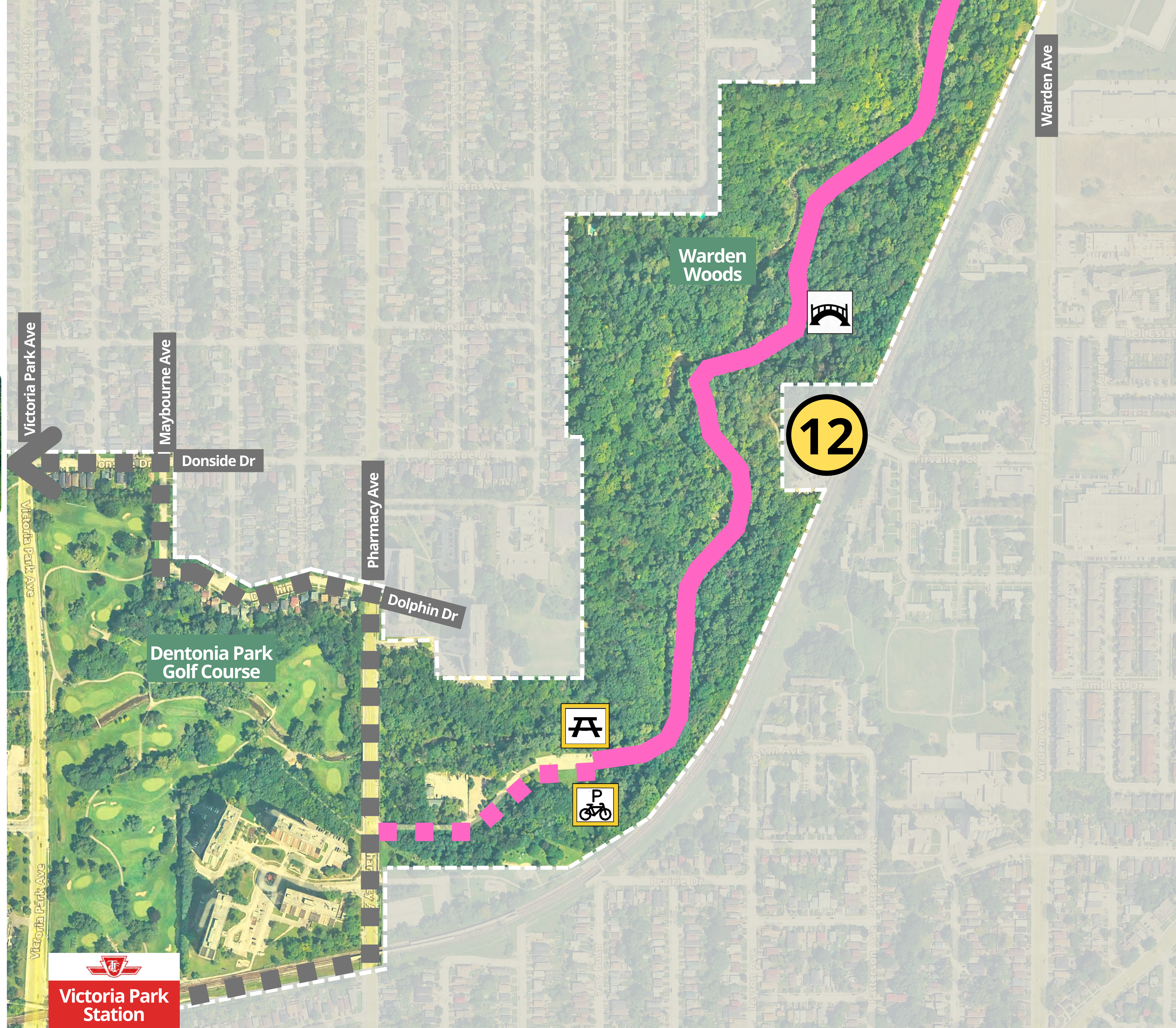


Photo by: Allison Oki

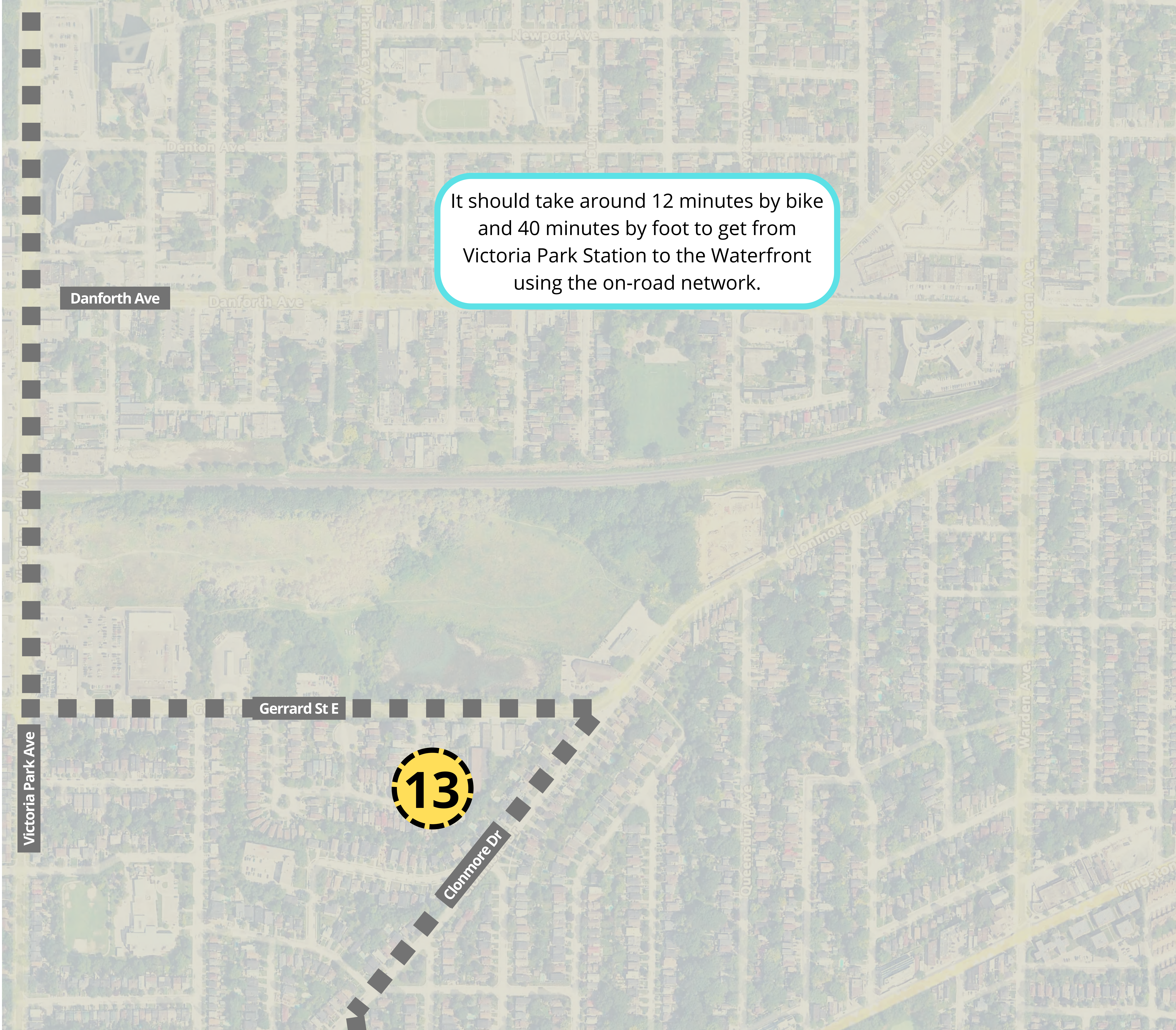
Unpaved part of the Gus Harris Trail



Photo by: Allison Oki

Paved part of the Gus Harris Trail





It should take around 12 minutes by bike and 40 minutes by foot to get from Victoria Park Station to the Waterfront using the on-road network.

Danforth Ave

Gerrard St E

Victoria Park Ave

13

Clonmore Dr





Photo by: Allison Oki

Path beside the RC Harris Water Treatment Plant

Our proposed Scarborough Waterfront Greenway will allow people to get all the way from the RC Harris Plant near the Eastern Beaches to Pickering while staying completely off-road!



RC Harris Water Treatment Plant